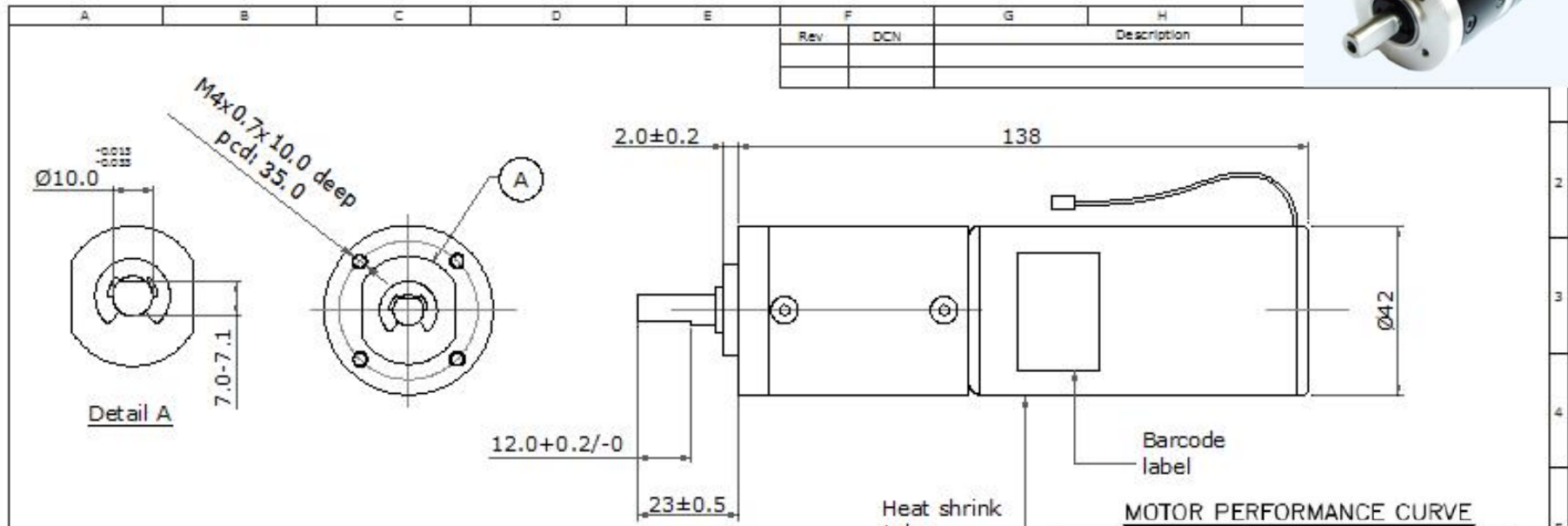
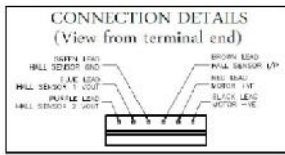
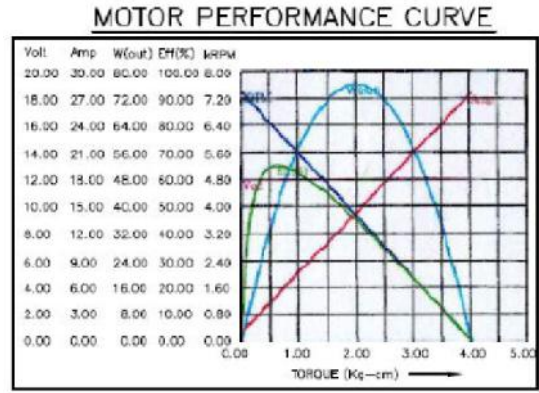


40 series geared motor



	Characteristics	Spec
	Rated voltage	12V DC
	Working voltage	9-17 V DC
Motor stand alone	No load speed	7700 rpm
	No load current	1.2 Amp
Geared motor	N/L speed	24 rpm
	Geared motor N/L current	2 Amps max
	Speed @ 7 Nm	20 +/- 2 rpm
	Current @ 7 Nm	5 Amps max
	Stall current	56 Amps
	Noise level	72 dB @ 30 cm
	Working temperature	-40 to 55 deg C
	Shaft axial play	0.7mm max



ALL DIMENSION IN MM		Decimal	Angle	Critical	UB Associates	
	NOT TO SCALE	± 0.1	$\pm 1^\circ$	Functional	Chennai, India	
MATERIAL		DATE	10.1.19	Safety	NAME Geared motor	
MATERIAL SPECIFICATION		CHECKED	crb	ITEM CODE		SIZE/TYPE
TREATMENT / FINISH		APPROVED	SU	DWG NO.	GM 11 000	REV. ISSUE